



earrings

Madhavi

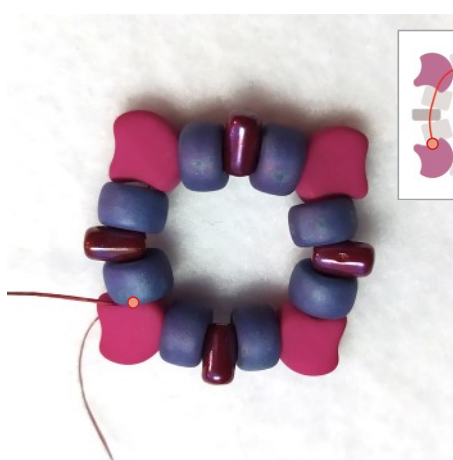
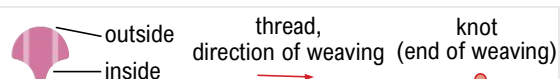


Materials (pair of earrings)

16 pcs **Matubo Ginko**
 8 pcs **Matubo Rulla**
 20 pcs **Matubo 2/0**
 16 pcs **Matubo 3CUT 6/0**
 4 pcs **Matubo 2/0**
 16 pcs **Matubo Superduo**
 32 pcs **Toho 11/0**
 64 pcs **Toho 15/0**
 2 pcs **jump rings**
 2 pcs **ear wire hooks or earring ball & ring studs with backs**. If you want the earrings more decorative use eye pins and some bigger beads.

beading needle (size 10 or 12)
 beading thread (S-Lon, Nymo...)

Difficulty: for beginners and intermediate



1) String 1x Ginko (from the inside), 1x M2/0, 1x Rulla, 1x M2/0, 1x Ginko (from the outside), 1x M2/0, 1x Rulla, 1x M2/0 and string the same row of beads again.

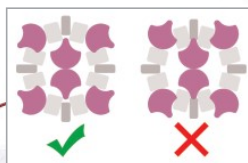
2) Tie the beads together with a double knot.

3) Go through the beads as shown in the picture - between M2/0 and Ginko.

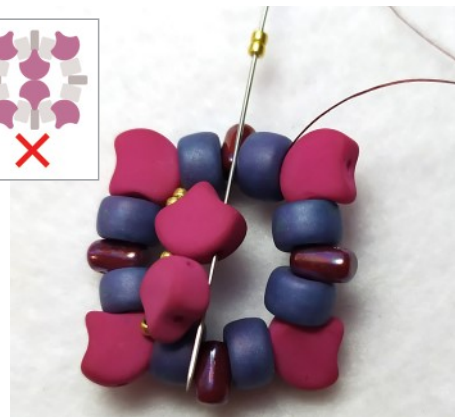


4) String 2x T15/0, 1x Ginko (from the inside), 1x T15, 1x Ginko (from the outside) and 2x T15/0.

Pay attention to the correct position of the Ginko beads!



5) Pass through M2/0, Rulla, M2/0 on the opposite side.



6) Add 2x T15/0 and sew through the nearest Ginko added in the previous step.



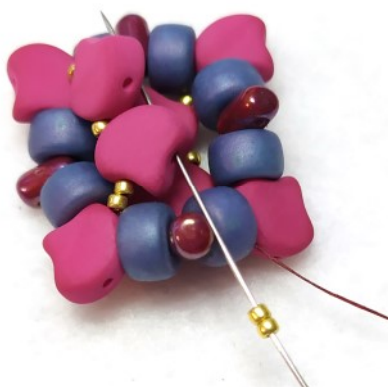
7) Add 1x T15/0 and sew through the next Ginko.



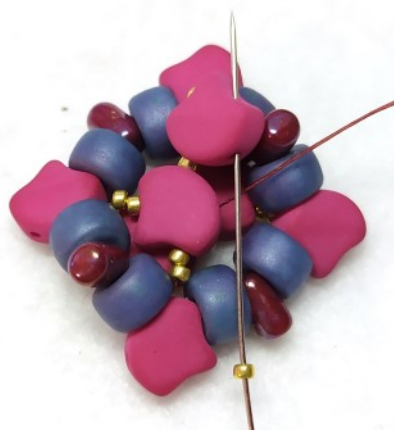
8) Add 2x T15/0 and pass through M2/0, Rulla, M2/0.



9) Turn the earring, string 2x T15/0, 1x Ginko (from the inside), 1x T15, 1x Ginko (from the outside), 2x T15/0. Pass through M2/0, Rulla, M2/0 on the opposite side.



10) Add 2x T15/0 and sew through the nearest Ginko added in the previous step.



11) Add 1x T15/0 and sew through the next Ginko.



12) Add 2x T15/0 and pass through M2/0 and Rulla.



13) Go back through the free hole of Rulla.



14) String 1x T15/0, 1x SD, 1x 3CUT, 1x T11/0 and sew through the free hole of the next Ginko (from outside).



15) String 1x T11/0, 1x 3CUT, 1x SD, 1x T15/0 and sew through the free hole of the next Rulla.



16) Repeat steps 14) and 15) until you complete the row. Pass through the beads between the first SD added in this row and next 3CUT.



17) Pass through the free hole of the same SD.



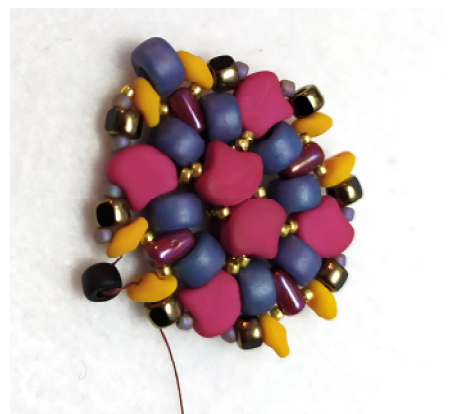
18) String 1x M2/0 and sew through the free hole of the next SD.



19) Add 1x T15/0, 1x T11/0 and go through the beads between 3CUT and next SD.



20) Add 1x T11 and sew through the free hole of the SD.



21) Add 1x M6/0 and go through the free hole of the next SD.



22) Add 1x T11/0 and go through the beads between 3CUT and next SD.



23) Add 1x T11/0 and 1x T15/0 and sew through the free hole of the SD.



24) Repeat steps 18) - 20)



25) Pass again through beads as shown. Finish with a knot and stitch.



26) Use jump ring to connect M2/0 with the earring hook. If you want the earrings more decorative, add eye pins and some bigger beads.



27) Make the second earring.



Ginko: 02010/29529
 Rulla: 23980/15726
 Matubo 2/0: 03000/14494
 Superduo: 02010/92928
 3CUT 6/0: 03000/14495
 Matubo 6/0: 70120
 Toho11/0: TR-11-413
 Toho 15/0: TR-15-2107



Ginko: 02010/29527
 Rulla: 93200/15001
 Matubo 2/0: 63030/85001
 Superduo: 02010/29536
 3CUT 6/0: 23980/90215
 Matubo 6/0: 23980/84110
 Toho11/0: TR-11-2638F
 Toho 15/0: TR-15-PF557



Ginko: 10060/26442
 Rulla: 02010/24106
 Matubo 2/0: 93200/86805
 Superduo: 02010/24106
 3CUT 6/0: 53410/43500
 Matubo 6/0: 53410
 Toho11/0: TR-11-148F
 Toho 15/0: TR-15-44



Ginko: 60020/29801
 Rulla: 23980/79031
 Matubo 2/0: 23980/15001
 Superduo: 23980/24203
 3CUT 6/0: 00030/27000
 Matubo 6/0: 60020
 Toho11/0: TR-11-413
 Toho 15/0: TR-15-108BD



Ginko: 63030/43500
 Rulla: 02010/24106
 Matubo 2/0: 83120/86805
 Superduo: 02010/29525
 3CUT 6/0: 23980/90215
 Matubo 6/0: 23980/84110
 Toho11/0: TR-11-49F
 Toho 15/0: TR-15-557



Ginko: 00030/65594
 Rulla: 02010/24103
 Matubo 2/0: 93200
 Superduo: 02010/29535
 3CUT 6/0: 53410/43500
 Matubo 6/0: 93200/14400
 Toho11/0: TR-11-557
 Toho 15/0: TR-15-557