



## Fairy Wings Earrings

Big and bold, but still very lightweight and comfortable to wear. Make these earrings with Matubo Ginko beads



### Material (for one pair of earrings)

Matubo Ginko (12 pcs)

Matubo 11/0 (12 pcs)

Miyuki Delica 10/0 (12 pcs)

Miyuki Round 15/0 (approx. 1.1 gram)

3mm round beads (14 pcs)

Embellishment (like tassels, drop-shaped beads, jewelry chain or small charms) (2 pcs)

Jump rings, earring findings of your choice

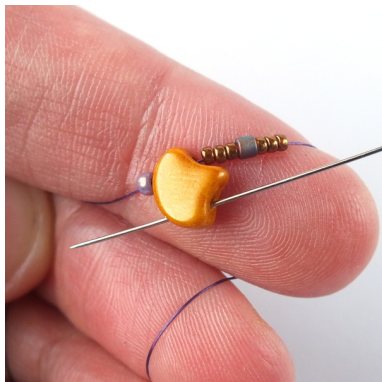
Beading needle and thread (Nymo, Fireline...)

Difficulty: Intermediate





1) String one 11/0, one Ginko (from the outside), three 15/0s, one 10/0 Delica and three more 15/0s.



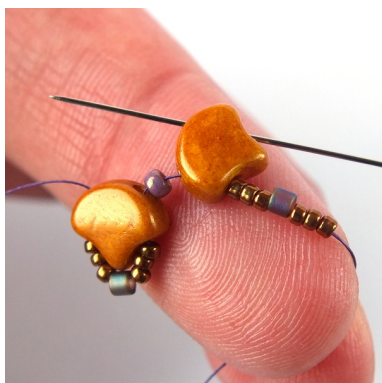
2) Slide all the beads to the end of the thread and then pass back through the other hole of the Ginko bead.



3) This is what you should get.



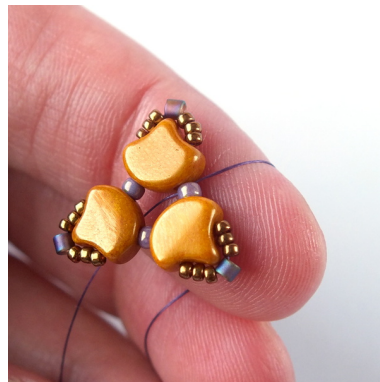
4) Add one 11/0, one Ginko (from the outside), three 15/0s, one 10/0 Delica and three more 15/0s.



5) Slide all the new beads down to the previous beads and then pass back through the other hole of the new Ginko, like in step 2.



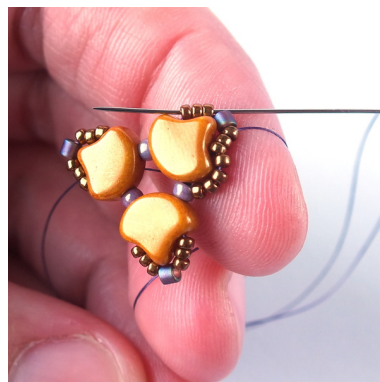
6) Repeat steps 4 and 5 one more time.



7) Tie a square knot. The beads will form a triangular shape.



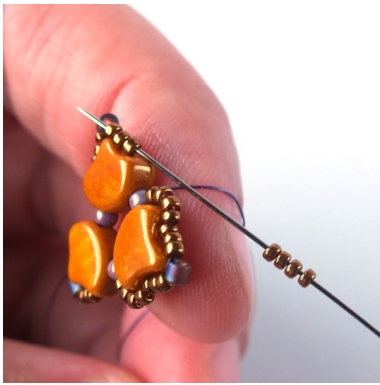
8) Add four 15/0s. Pass through the nearest three 15/0s ...



9) ... skip the Delica and then pass through the next three 15/0s.



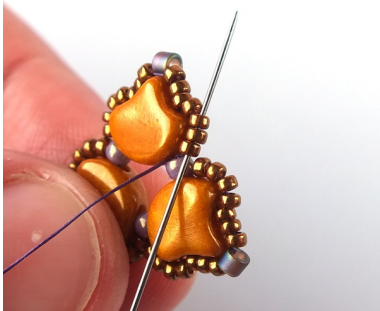
10) Add four 15/0s and pass through the next 11/0.



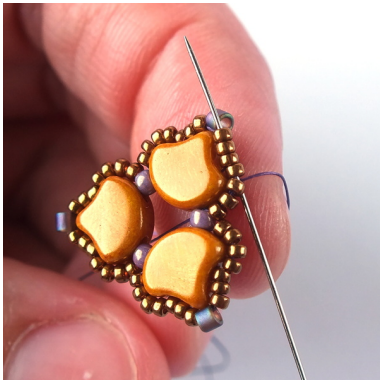
11) Repeat steps 8-10 ...



12) Until you reach the end of the row.

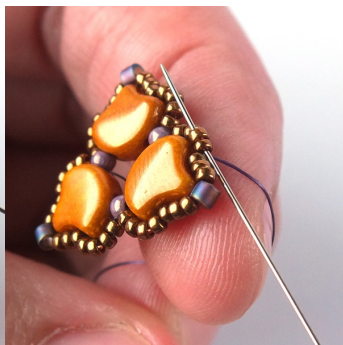


13) Weave through the next seven 15/0 ...

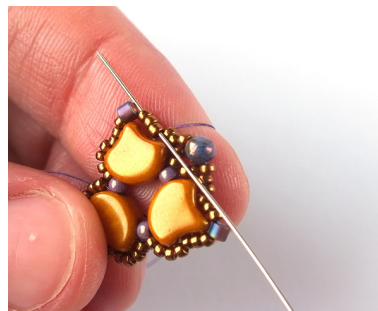


14) ... until you get to the Delica in the corner ...

15) Then pass through the Delica and the next five 15/0s.

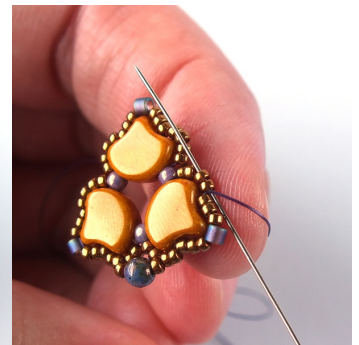
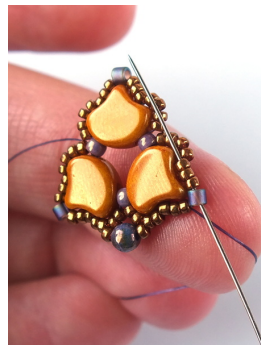


16) Add one 15/0, one 3mm round and one 15/0. Skip the next two 15/0s, the 11/0 between the Ginkos and the next two 15/0s. Then pass through the next two 15/0s (as shown in the photo) ...

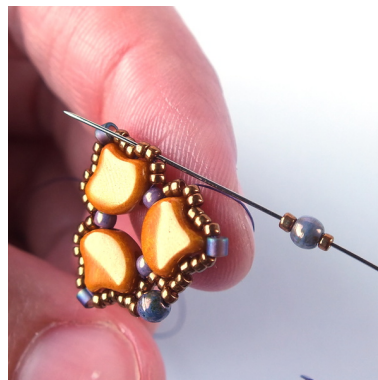


17) ... and through the next three 15/0s ...

18) ... through the Delica and the next five 15/0s.



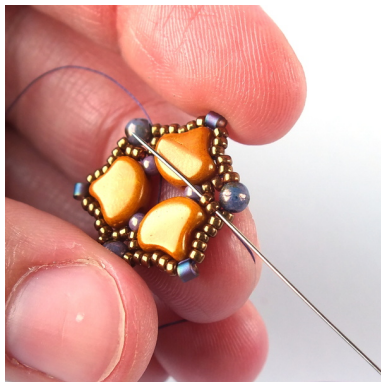
19) Repeat steps 16 - 18 ...







20) ... until you reach the end of the row.

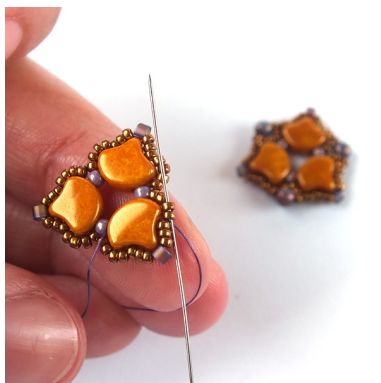


21) Tie a few half-hitch knots and cut off all the remaining thread.

Tip: The best place to tie off the thread is between the beads underneath the 3mm round (as shown in the photo above). If you tie the knot anywhere else, it might cause some problems later, when you'll need to pass through the 15/0s again.



Also if you prefer smaller earrings, you can use this component as it is, without making the second half – just make the second piece, add earring findings of your choice and some embellishment if desired.

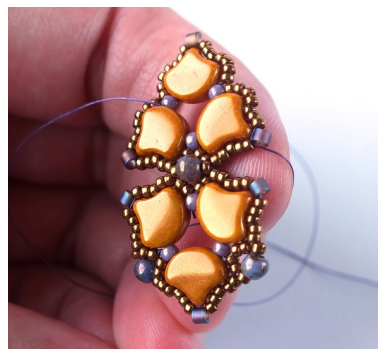


22) Start making the second component (steps 1 – 15)

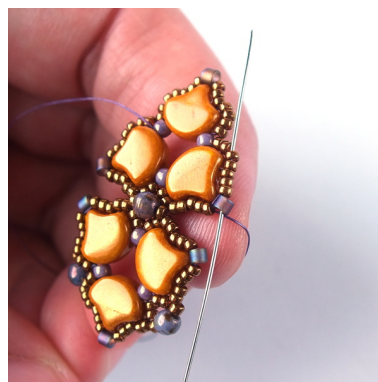
23) ... but then, when you'd get to the step 16, instead of adding the first group of (15/0, 3mm round, 15/0), pass through one of the (15/0, 3mm round, 15/0) groups from the previous component and then through the two 15/0s on the new component, just like in step 16.



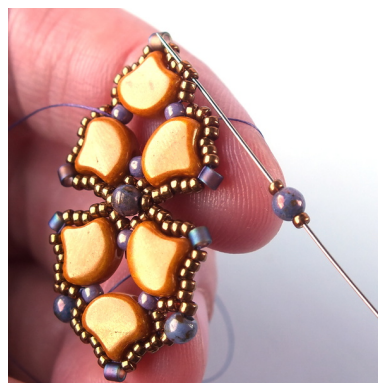
24) Now both components are connected together.



25) Then finish the new component by repeating steps 17 – 20 ...



26) ... until you reach ...





27) ... the end of the row.



30) Pass through the next five 15/0s ...

28) Then go through all the 15/0s until you get to the 10/0 in the nearest corner - and then also pass through the next 15/0.



31) ... like in steps 15 and 17 ...

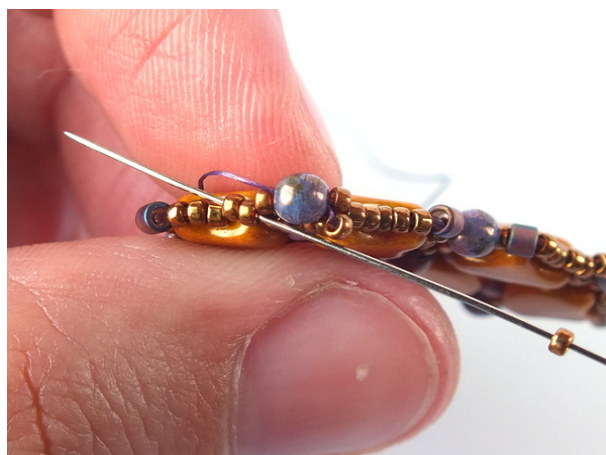
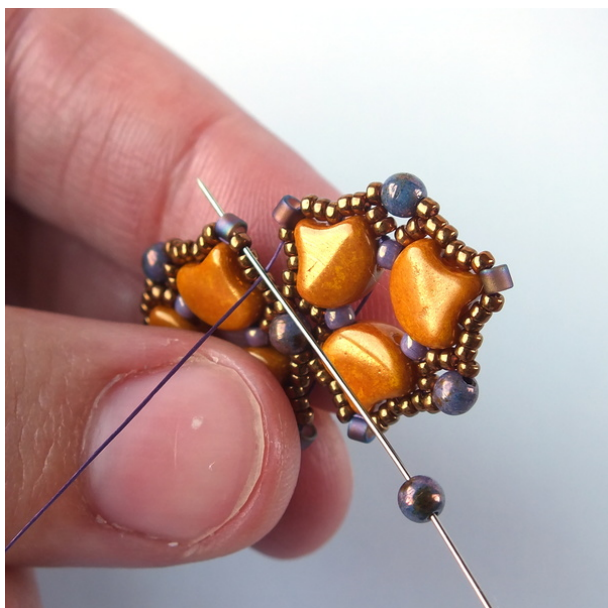


32) Add one 15/0 and pass through the 3mm round.

29) Add one 3mm round and pass through the corresponding 15/0 and 10/0 on the other component.



33) Add one 15/0. Skip the 15/0 just behind the 3mm round and pass through the next two 15/0s ...

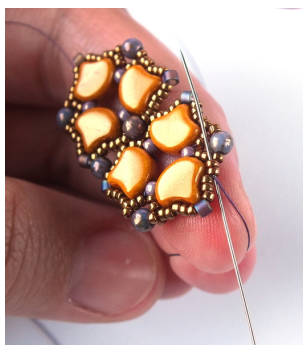




34) ... and then through the next three 15/0s and the Delica in the corner (again, similar to steps 16 and 17).



35) Repeat steps 30-34 on the next side of the same component.



36) Then weave through beads to get to the Delica in the next corner and also pass through the next 15/0 (like step 28).



37) Repeat step 29 ...

38) ... and steps 30 - 35 ...



39) ... on the half of the earring.



40) The earring is finished. Tie a few half-hitch knots and cut off all the remaining thread.



41) Use thin jump rings to attach earring findings and possible embellishment.



## Colorways:



**Matubo Ginko** 63130-27173ba  
**Matubo 11/0** 23980/14415  
**Miyuki Delica 10/0** 380  
 Matte Met Khaki Iris  
**Miyuki Round 15/0** 2035  
 Matte Met Khaki Iris  
**3mm round beads** 63120



**Matubo Ginko** 02010/29536  
**TOHO Round 11/0** 613  
 Matte-Color Iris Grey  
**Miyuki Delica 10/0** 21 Steel  
**Miyuki Round 15/0** 190F  
 Matte Steel  
**3mm round beads** 93140/15001



**Matubo Ginko** 02010/29535  
**Matubo 11/0** 00030/01700  
**Miyuki Delica 10/0** 729  
 Opaque Turquoise Green  
**Miyuki Round 15/0** 190 Steel  
**3mm round beads** 63120



**Matubo Ginko** 83120/14495  
**Matubo 11/0** 03000/14496  
**Miyuki Delica 10/0** 865  
 Matte Brown AB  
**Miyuki Round 15/0** 457L  
 Metallic Light Bronze  
**3mm round beads** 03000/65426



**Matubo Ginko** 63030/15001  
**Matubo 11/0** 00030/90215  
**Miyuki Delica 10/0** 22L  
 Metallic Light Bronze  
**TOHO Round 15/0** 421  
 Gold Lustered Transparent Pink  
**3mm round beads** 93140/15001