



GIWI-R Necklace



MATERIAL LIST

40 SWAROVSKI 5328 crystal bicone beads 4mm **SW4**

40 Czech Pearls size 4mm **PL4**

20 WibeDuo beads **WD**

40 ARCOS beads **AR**

60 Czech GINKO bead GN

5 gram Miyuki round seed beads size 11/0 **R11**

6 gram Miyuki Round Seed Beads size 8/0 **R8**

40 Miyuki drop Beads size 3.40 **DP**

Magnetic Clasp

Fireline 6lb or similar

12# beading needle

BASIC

Starting your work:

Start with a comfortable thread length. I recommend about 5 feet (about 1.50 meter) for starting.

String a stopper bead leaving about a 4" (10 cm) tail. Go through the stopper bead twice to anchor the bead. A stopper bead is an 11/0 round seed bead of a different color from those you are working with. This bead will be removed at the end of your work or if mentioned otherwise.

Don't Forget:

Never use the same thread you worked in your beading project to attach the clasp. Use a new thread. This will allow you to replace the clasp in case it is broken or to extend your work, without losing your work.

Adding Thread:

Usually, I think it is best to knot the new thread into the work a few beads before the end of the thread. The knot should be between two beads and then continue through the beads that the old thread is coming out of. Only then finish the old thread.

Finishing Added Thread:

Never cut the thread near the knot point. The knot point is a weak point and can open. After attaching the new thread between two beads with double knot, I recommend to take the tail and pass it back through at least 2 inches of beads before cutting.

Finishing your beadwork:

Finish all threads before adding the clasp. Try to leave the beads you will attach the clasp to free from finishing threads as much as you can.

STEP 1 NECKLACE

Pick up 1xR8, 1xGN, 1xR11, 1xR8, 1xDP, 1xR8, and 1xR11. Go through the free hole of the GN.



STEP 2

Pick up 1xR8, 1xPL4, 1xR8, 1xR11, 1xWD, 1xGN, 1xAR, 1xGN, 1xR11, 1xR8, 1xDP, 1xR8 and 1xR11. Go through the free hole of the last GN you just added. Pay attention to which hole of the GN and ARCOS you use.



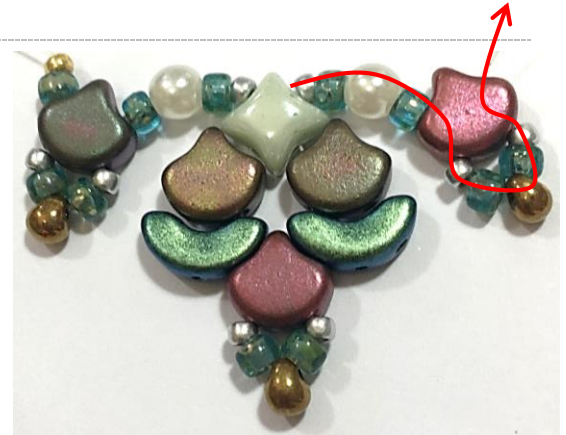
STEP 3

Pick up 1xAR and 1xGN. Go through the free hole of the WD.



STEP 4

Pick up 1xR11, 1xR8, 1xPL4, 1xR8, 1xGN, 1xR11, 1xR8, 1xDP, 1xR8 and 1xR11. Go through the free hole of the GN you just added.



STEP 5

Repeat steps 2-4 reaching the length of the necklace you need.



STEP 6

Pick up 1xR8. Go through the last GN and continue through the R11, R8, DP and the following R8.



STEP 7

Pick up 2xR11. Go through the free hole of the next GN.



STEP 8

Pick up 1xR11. Go through the third hole of the AR.



STEP 9

Pick up 1xR11, 1xSW4 and 1xR11. Go through the R11, R8, DP, R8 and R11.



STEP 10

Pick up 1xR11, 1xSW4 and 1xR11. Go through the third hole of the AR.



STEP 11

Pick up 1xR11. Go through the free hole of the next GN.



STEP 12

Pick up 2xR11. Go through the next R8, DP and R8.



STEP 13

Repeat steps 7-12 over the length of the necklace. Finish by pointing out from the last R8. Remove the stopper bead and knot threads twice. Finish the threads.



STEP 14

Attach new thread which is about 10 inch/25 cm. Locate your needle pointing out from the marked R8.

Pick up 1xR11, 1xR8, 1xR11, clasp and 1xR11, 1xR8, 1xR11. Close to a circle on the marked R8, as shown. Go through all the beads to reinforce the work and then finish the thread.

Repeat this step on the other side of the necklace.



For more Jewelry Patterns & Kits, beading supply please visit my shops:

<http://www.etsy.com/shop/bead4me>
<http://www.isabellalam.com>

Important: Purchasing this pattern, you have agreed to use it only for your personal, non-commercial use. The purchase of this pattern does not give you permission to copy, duplicate or sell this pattern. ©All rights reserved, apply to the design and illustrations of this pattern Created by Isabella Lam