



## Isabella Pendant

Flower-shaped pendant with Matubo Rivoli and Nib-Bit beads



### Material (for one pendant)

Matubo Nib-Bit (12 pcs)  
 Matubo Miniduo (12 pcs)  
 Matubo 8/0 (24 pcs, approx. 1 gram)  
 Matubo 6/0 or 6/0 3-CUT (36 pcs)  
 Matubo 11/0 (approx. 2 grams)  
 15/0 Miyuki seed beads (approx. 0.8 gram)  
 3mm firepolished beads (24 pcs)  
 18mm rivoli or a cabochon

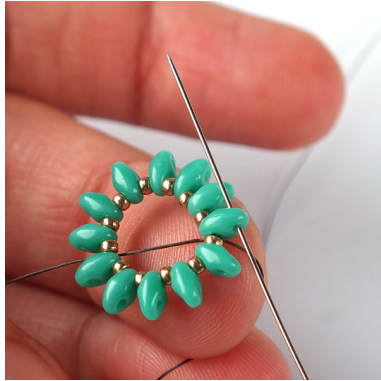
Beading needle and thread (Nymo, Fireline ...)

Difficulty: Intermediate

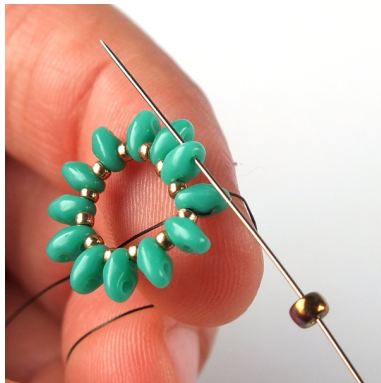




1) String one MD and one 15/0, one MD and one 15/0 ... total twelve of each.



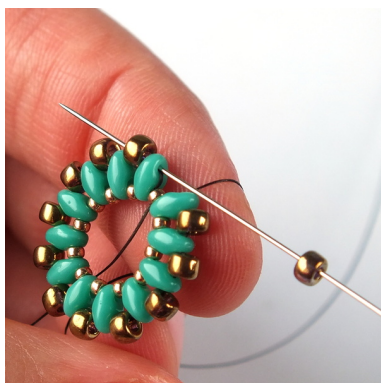
2) Slide all the beads to the end of the thread and tie a square knot to form a circle. Then pass through the upper hole of the nearest MD.



3) Add one 8/0 and pass through the upper hole of the next MD.



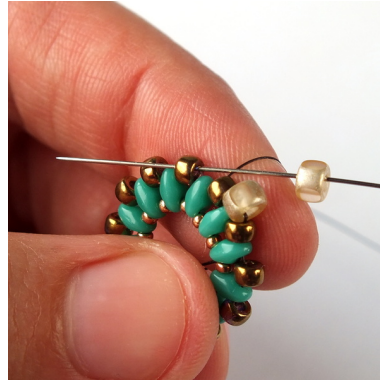
4) Repeat step 3, until you reach the end of the row.



5) At the end of the row make the step-up: add one last 8/0 and pass through the upper hole of the last MD and then through the first 8/0 in the row.



6) Add one 6/0 and pass through the next 8/0 in the row.



7) Repeat step 6 ...



8) ... until you reach the end of the row.  
At the end of the row make the step-up: add one last 6/0 and pass through the last 8/0 from the previous row and through the first 6/0 in this row.



9) Add one 6/0 and pass through the next 6/0 in the row.



10) Repeat step 9, until you reach the end of the row.  
At the end of the row make the step-up by adding the last 6/0 and then passing through the last 6/0 from the previous row and the first 6/0 from this row.

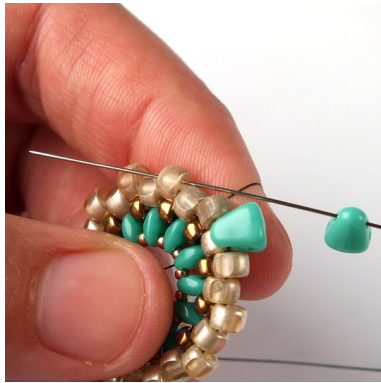




11) Add one NB (narrow end) and pass through the next 6/0 in the row.



16) Repeat step 15 ...



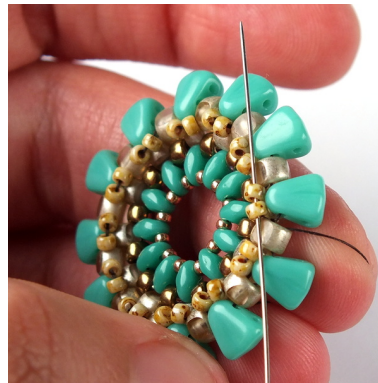
12) Repeat step 11 ...



17) ... until you reach the end of the row.



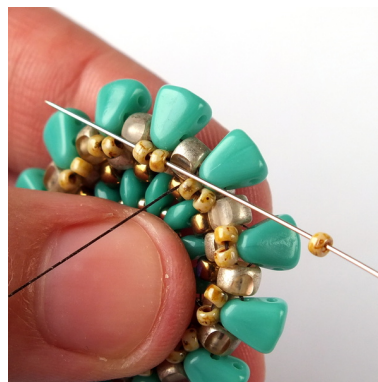
13) ... until you reach the end of the row. Keep your tension very tight. The new NB beads should lie flat above the 6/0s from the previous row – like shown in the photo.



18) At the end of the row make the step-up by passing through the first pair of 11/0s.



14) The thread is exiting from one of the 6/0s.



19) Add one 11/0 and pass through the next pair of 11/0s.

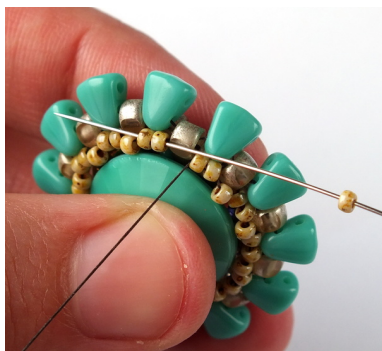


15) Add two 11/0s and pass through the next 6/0 in the same row.



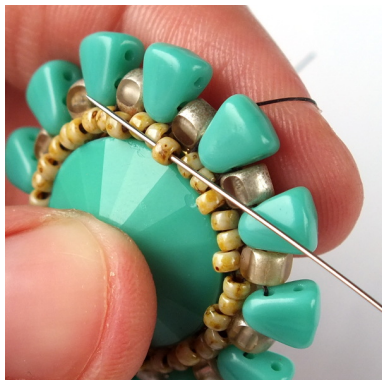
20) Repeat step 19 ...





21) ... until you reach the end of the row.

Put the rivoli/cabochon inside, back side first.



22) Make the step-up by passing through the first 11/0 in this row.



23) Add three 15/0s and pass through the next 11/0 in the row.

24) Repeat step 23, until you reach the end of the row.



25) Weave through the last row one more time.

(If necessary, you can add more rows of peyote stitch to further secure the rivoli/cab.)



26) Weave through beads to get to the upper hole of one of the NB beads.

Add one 6/0 and pass through the upper hole of the next NB in the row.



27) Keep adding new 6/0s (like in step 26) ...



28) ... until you reach the end of the row.

At the end of the row make the step-up by adding the last 6/0 and passing through the upper hole of the last NB and through the first 6/0 in the row.



29) Add four 11/0s and pass through the next 6/0 in the row.



30) Repeat step 29 ...





30) ... until you reach the end of the row.

31) Make the step-up by passing through the first 11/0 in the first group of four 11/0s you added in this row.



32) Add two 11/0s. Skip the next two 11/0s and pass through the last 11/0 from the same group. Pull snug.



33) Add one 11/0, one 8/0 and one 11/0 and pass through the first 11/0 from the next group.



34) Repeat steps 32 and 33

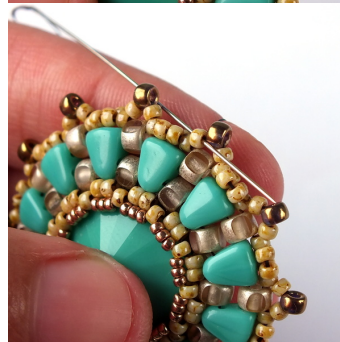
...



35) ... until you reach the end of the row.



36) Weave through the last row one more time – but always skip the 8/0. Keep your tension very tight.



37) At the end of the row the thread should exit from one of the pairs of 11/0s on the front side of the pendant.



38) Add four 15/0s, one 3mm FP and one 11/0. Then pass through the nearest 11/0, closest to the rivoli/cab (as shown in the photo)



39) Pull snug and then pass back through the new 11/0 and the 3mm FP



40) Add four 15/0s and pass through the next pair of 11/0s on the front side of the pendant.



41) Repeat steps 38 - 40 ...



42) ... until you reach ...



43) ... the end of the row.



44) The thread exits from the same pair of 11/0s you started from in step 37. Add one 11/0, one 3mm FP and one 11/0 and pass through the next pair of 11/0s.



45) Repeat step 44, until you reach the end of the row.





46) Tie a few half-hitch knots and cut off all the remaining thread. The pendant is finished.



### Tips:

When choosing colors for this project, note that some of the beads used will only be barely visible (8/0s, 6/0s) or will be only visible from the back side of the pendant (Miniduos).

This project works best with Matubo 11/0s and Miyuki 15/0s. If you choose to use different brands of beads, the pattern will still work, but it might curl a little bit while working and you might need to make some alterations/add more rows when closing the front side of the rivoli (as shown in the photo – in this pendant I used TOHO round 11/0s and 15/0s).



### Colorways:



Matubo Rivoli – Alabaster  
Matubo Nib-Bit 63030/15695  
Matubo Miniduo 63130/43400  
Matubo 8/0 63130/43400  
Matubo 6/0 63030  
Matubo 11/0 00030/27000  
15/0 Miyuki Seed Beads 4221  
Lt. Smky Pewter  
3mm 93200/15001



Lunasoft Cabochon – Salmon  
Matubo Nib-Bit 03000/65491  
Matubo Miniduo 70120  
Matubo 8/0 70120/85106  
Matubo 6/0 03000/90215  
Matubo 11/0 03000/15695  
15/0 Miyuki Seed Beads 4571  
Met. Lt. Bronze  
3mm Halo Ethereal – Heavens  
(1-03-P29267)



Matubo Rivoli – Opaque Turquoise  
Matubo Nib-Bit 63130  
Matubo Miniduo 63130  
Matubo 8/0 00030/90215  
Matubo 6/0 3-CUT 70210/81002  
Matubo 11/0 03000/65415  
15/0 Miyuki Seed Beads 4204  
Duracoat Galvanized Champagne  
3mm 23980/84100/90215