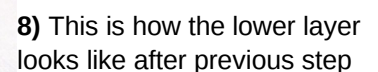
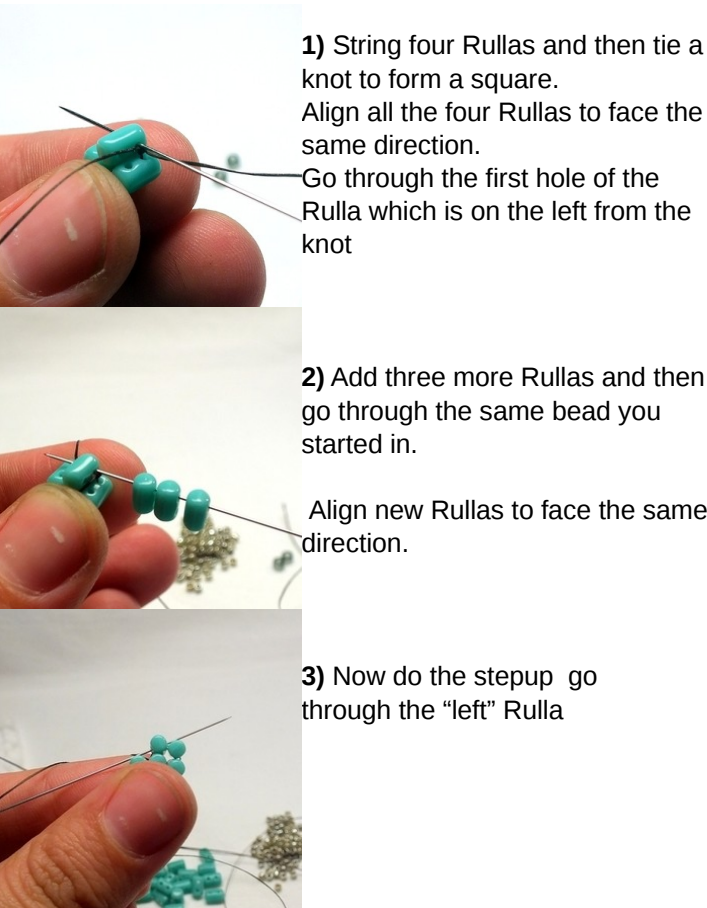
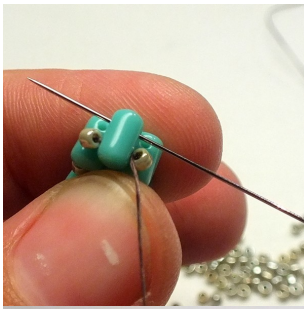


Three images showcasing beaded jewelry. The top left image shows a pair of earrings made of turquoise and gold beads. The bottom left image shows a pair of earrings made of dark blue and gold beads. The right image shows a large necklace made of red, orange, and green beads.

www.gianellebeadforum.cz | www.zrzavakocka.cz

Technique: right angle weave

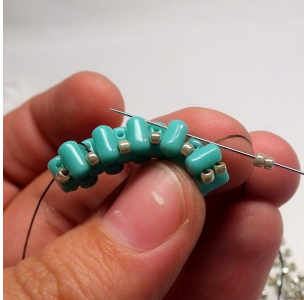




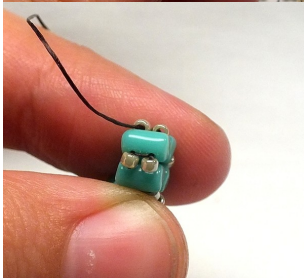
9) Now go to the upper, "free" layer



10) Add one 11/0 seed bead in the corners ...



11) and two 11/0 seed beads between each of the Rullas on the side.



12) End the row by going up from one of the "corner" 11/0 seed beads.



13) Pick up two 11/0s, one 8/0 and two 11/0s. Skip the Rulla and go through the next "corner" 11/0 bead in the same layer.



14) Go up through the next 11/0 bead in the same corner.



15) Add two 11/0s and go through the 8/0



16) Add two 11/0s and go through the last "corner" 11/0 bead.



17) Tie a few halfhitch knots, cut off the remaining thread. Open a jump ring and put it through the 8/0 seed bead and then attach an earwire.

Variations:



Embellished arcs



To achieve a gentler curve, use 8/0s in step 7

Design and tutorial by Nela Kábelová
(www.gianelle.beadforum.cz)
Personal use only.
www.matubobeads.com