



## Duo Necklace

## MATERIAL LIST

Approx. 320 – Superduo beads **SD**

3 grams - 3.4mm Miyuki drop beads **DP**

31 - 4mm Swarovski crystal beads **SW4**

5 grams round seed beads size 8/0 **R8**

2 grams round seed beads size 15/0 **R15**

12 grams round seed beads size 11/0 **R11**

Magnetic or Toggle clasp

Fireline 6lb or similar

12# needle

---

## BASIC

---

### Starting your work:

Start with a comfortable thread length. I recommend about 5 feet (about 1.50 meter) for starting.

String a stopper bead leaving about 4" (10 cm) tail. Go through the stopper bead twice to anchor the bead. (Stopper bead is an 11/0 round seed beads of a different color from those you are working with. This bead you will remove at the end of your work or if mentioned otherwise).

### Don't Forget:

Never use the same thread you worked in your beading project to attach the clasp. Use a new thread. This will assure and allow you to replace the clasp in case in got broken or extend your work, without losing your work.

### Adding Thread:

Usually I think it is best to knot the new thread into the work a few beads before the end of the thread. The knot should be between two beads and then continue through the beads that the old thread is coming out of. Only then finish the old thread.

### Finishing Added Thread:

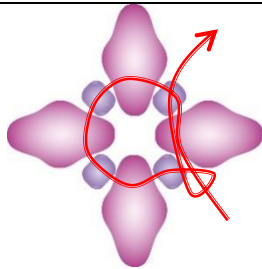
Never cut the thread near the knot point. The knot point is a weak point and can be opened. After attaching the new thread between two beads with double knot, I recommend to take the short tail left and pass it back through the beads (at least 2 inches) before cutting.

### Finishing your beadwork:

Finish all threads before adding the clasp. Try to leave the beads you will attach the clasp to, free from threads as much as you can.

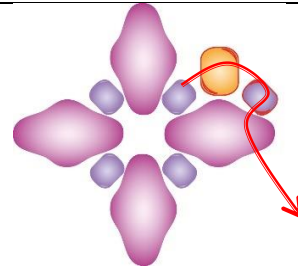
#### STEP 1

Pick up 1xSD and 1xR11 four times. Close to a circle. Pull out the stopper bead and knot the threads. Locate your needle pointing out from the nearest R11.



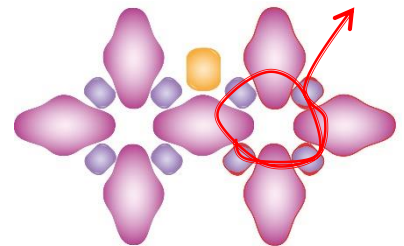
#### STEP 2

Pick up 1xR8, 1xR11. Go through the free hole of the SD.



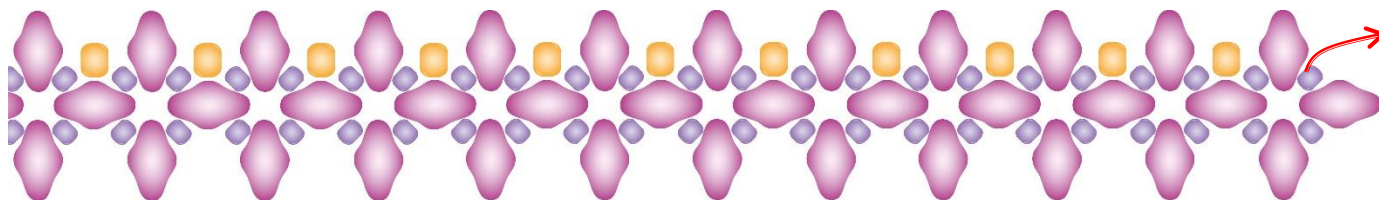
#### STEP 3

Pick up 1xR11 and 1xSD three times. Close to a circle on the SD that you began this step. Finish by pointing out from the marked R11.



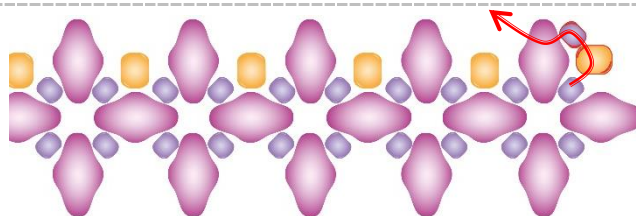
## STEP 4

Repeat step 2 and step 3 until you reach your desire length. Finish with step 3. You should have an even number of SD along the top of the row. For example: 54, 58, 62, and 66.



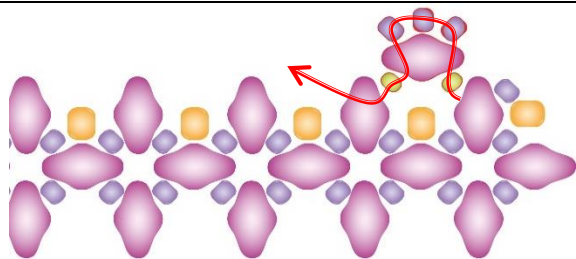
## STEP 5

Pick up 1xR8, 1xR11. Go through the free hole of the marked SD.



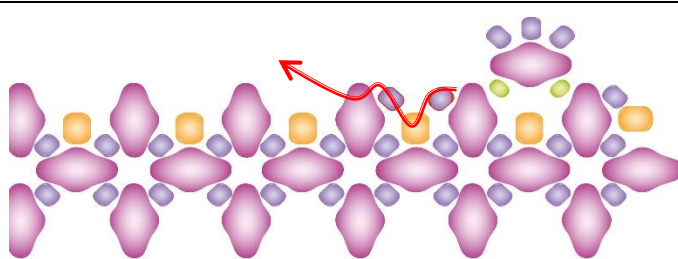
## STEP 6

- A. Pick up 1xR15, 1xSD and 3xR11. Go through the free hole of the SD you just added.
- B. Pick up 1xR15. Go through the free hole of the next SD.



## STEP 7

- A. Pick up 1xR11. Go through the R8.
- B. Pick up 1xR11. Go through the free hole of the next SD.

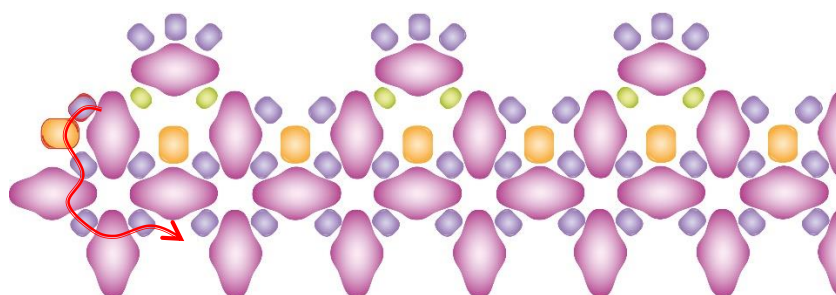


## STEP 8

Repeat steps 6 and 7 over the length. Finish with step 6.

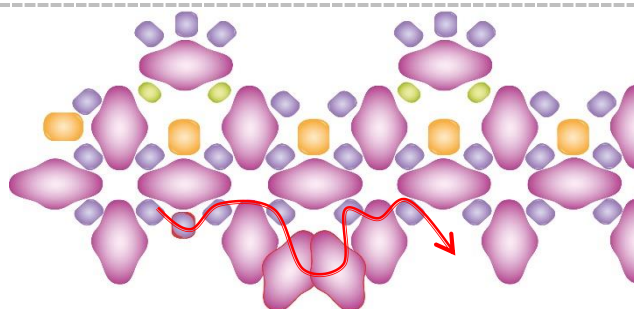
## STEP 9

At the end pick up 1xR11 and 1xR8. Go down through the marked R11, SD, R11, SD and R11.



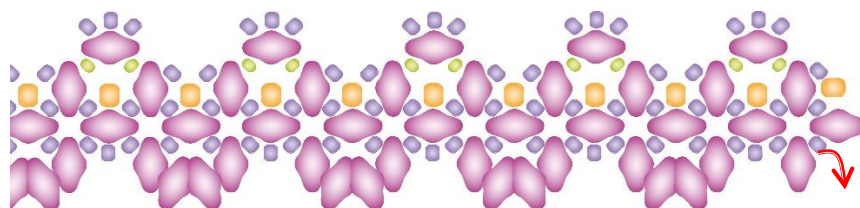
## STEP 10

- A. Pick up 1xR11. Go through the next R11, SD and R11.
- B. Pick up 2xSD. Go through the R11, SD, R11.



## STEP 11

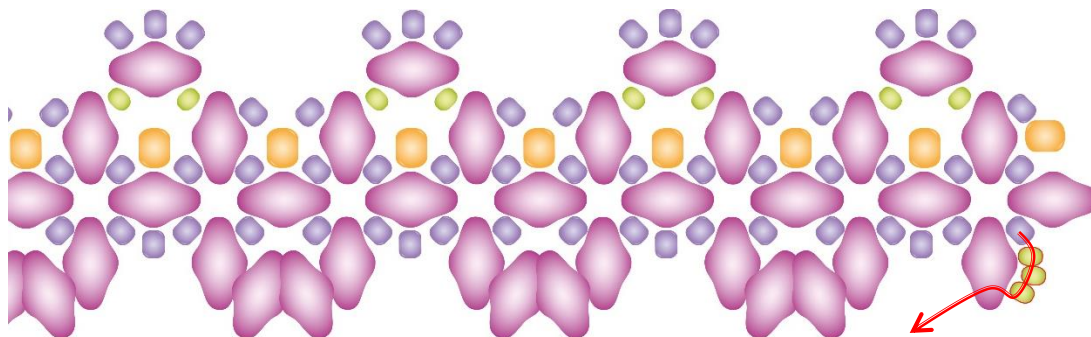
Repeat step 10 over the length. Finish with step 10A.





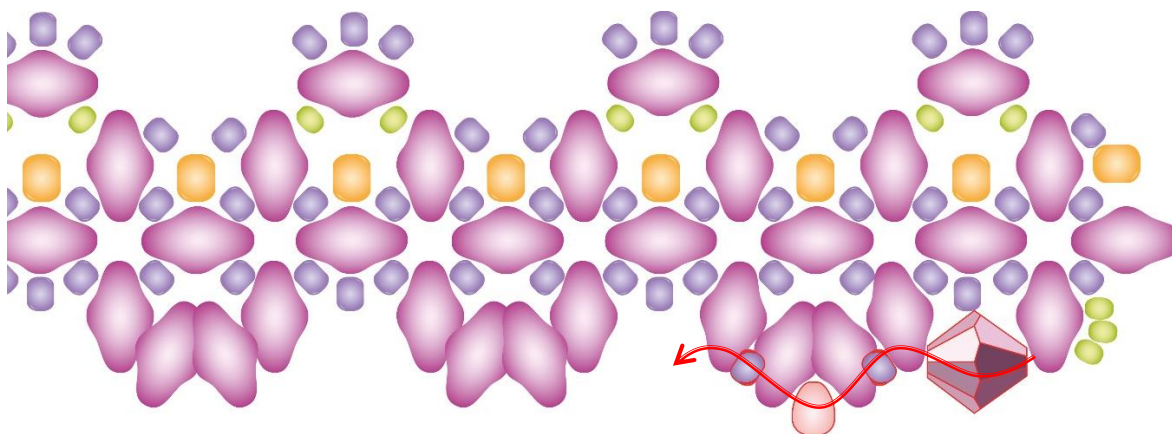
## STEP 12

Pick up 3xR15. Go through the free hole of the SD.



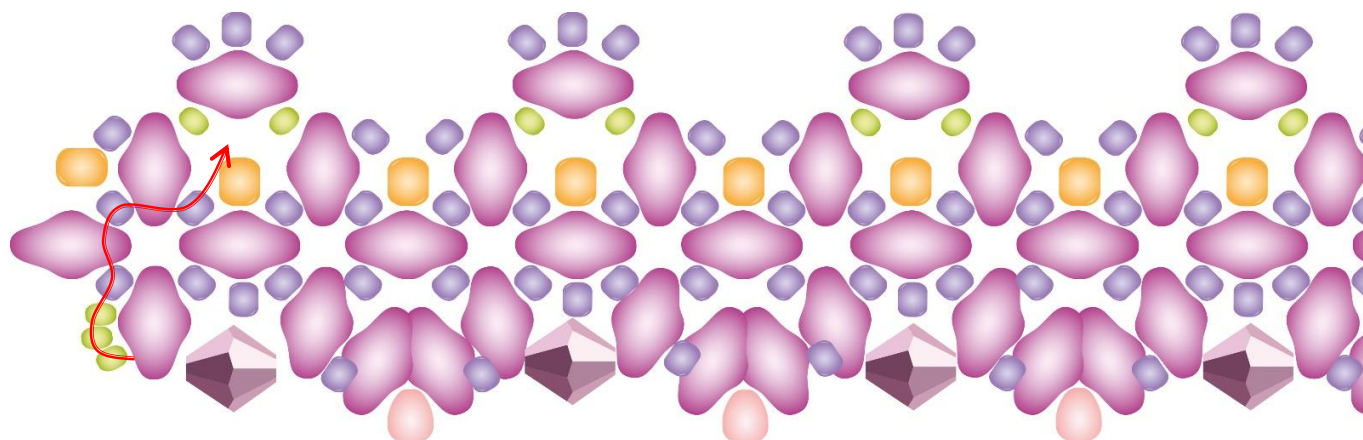
## STEP 13

- A. Pick up 1xSW4. Go through the free hole of the next SD.
- B. Pick up 1xR11. Go through the free hole of the next SD.
- C. Pick up 1xDP. Go through the free hole of the next SD.
- D. Pick up 1xR11. Go through the free hole of the next SD.
- E.



## STEP 14

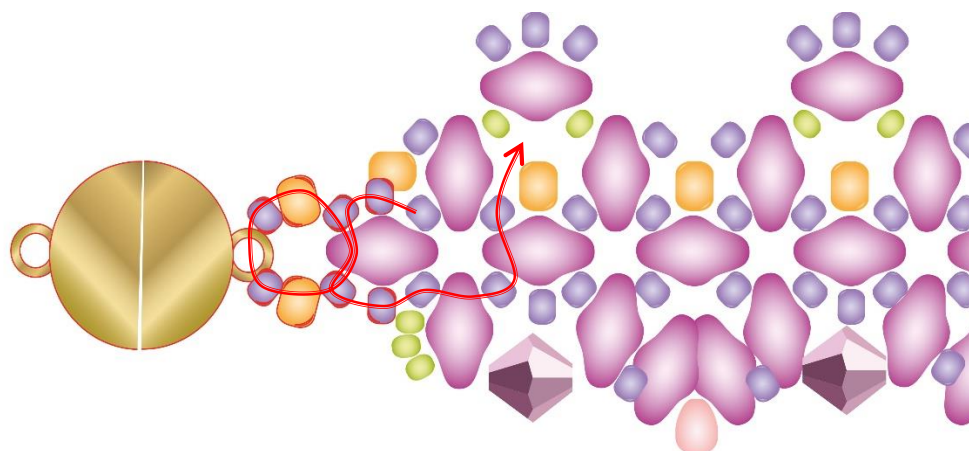
Repeat step 13 over the length. At the end, pick up 3xR15. Go through the beads to the marked R11 and finish the thread.



## STEP 15

Attach new thread about 10 inch/25 cm. Locate your needle pointing out from the marked R11.

- A.** Pick up 2xR11. Go through the free hole of the SD.
- B.** Pick up 1xR11, 1xR8, 1xR11, clasp, 1xR11 and 1xR8. Go through the following R11, SD and R11. Go through all the beads again to reinforce the thread.
- C.** Pick up 1xR11 and go through the beads to the marked R11 and then finish the thread.

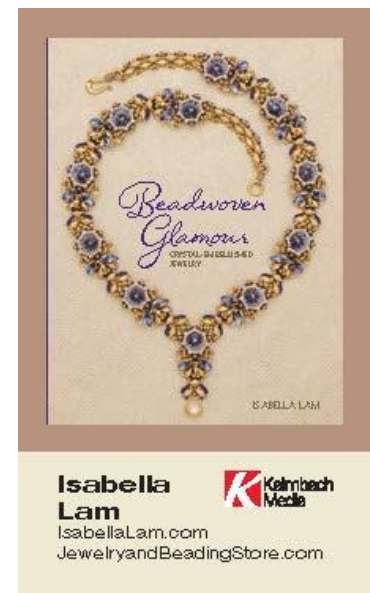
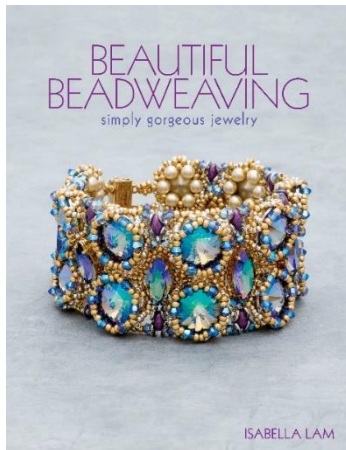


**Repeat this step on the other side of the necklace.**

For more Jewelry Patterns & Kits, beading supply please visit my shops:

<http://www.etsy.com/shop/bead4me>

<http://www.isabellalam.com>



Important: Purchasing this pattern, you have agreed to use it only for your personal, non-commercial use. The purchase of this pattern does not give you permission to copy, duplicate or sell this pattern. ©All rights reserved, apply to the design and illustrations of this pattern Created by Isabella Lam

©Patterns & Copyrights belong to Isabella Lam

[www.bead4all.com](http://www.bead4all.com) • [www.isabellalam.com](http://www.isabellalam.com) • <https://www.etsy.com/shop/bead4me>